

VILLAGES OF VALENCIA PHASE 4

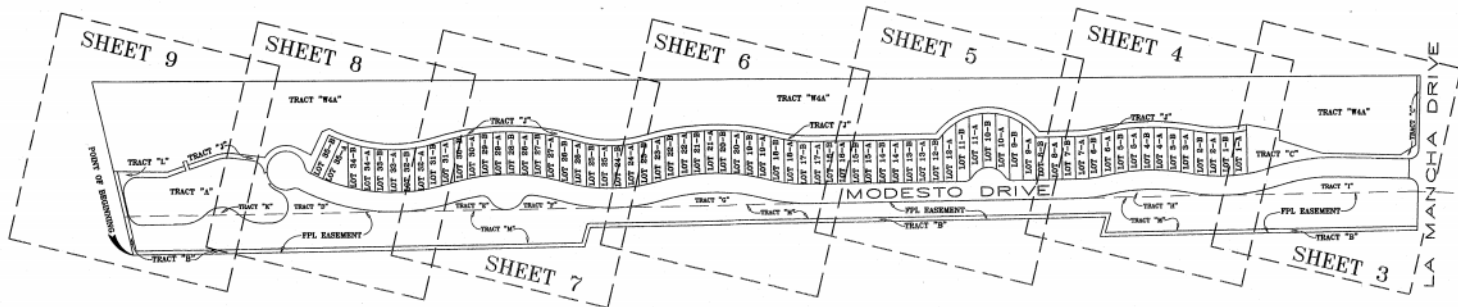
A PARCEL OF LAND SITUATED IN SECTION 17,
TOWNSHIP 8 SOUTH, RANGE 30 EAST, ST. JOHNS COUNTY, FLORIDA.

MAP BOOK 101 PAGE 70
SHEET 2 OF 9

KEY MAP



0 100 200 400
SCALE: 1 INCH = 100 FEET



PLAT PREPARED BY:
ANCIENT CITY SURVEYORS
 INC.



ACS
 PROFESSIONAL LAND SURVEYORS

4425 U.S. HIGHWAY No. 1 SOUTH - SUITE 401
 ST. AUGUSTINE, FLORIDA 32086
 PHONE: 904-797-9967 FAX: 904-797-6027
 E-MAIL: acs-surveyors@comcast.net