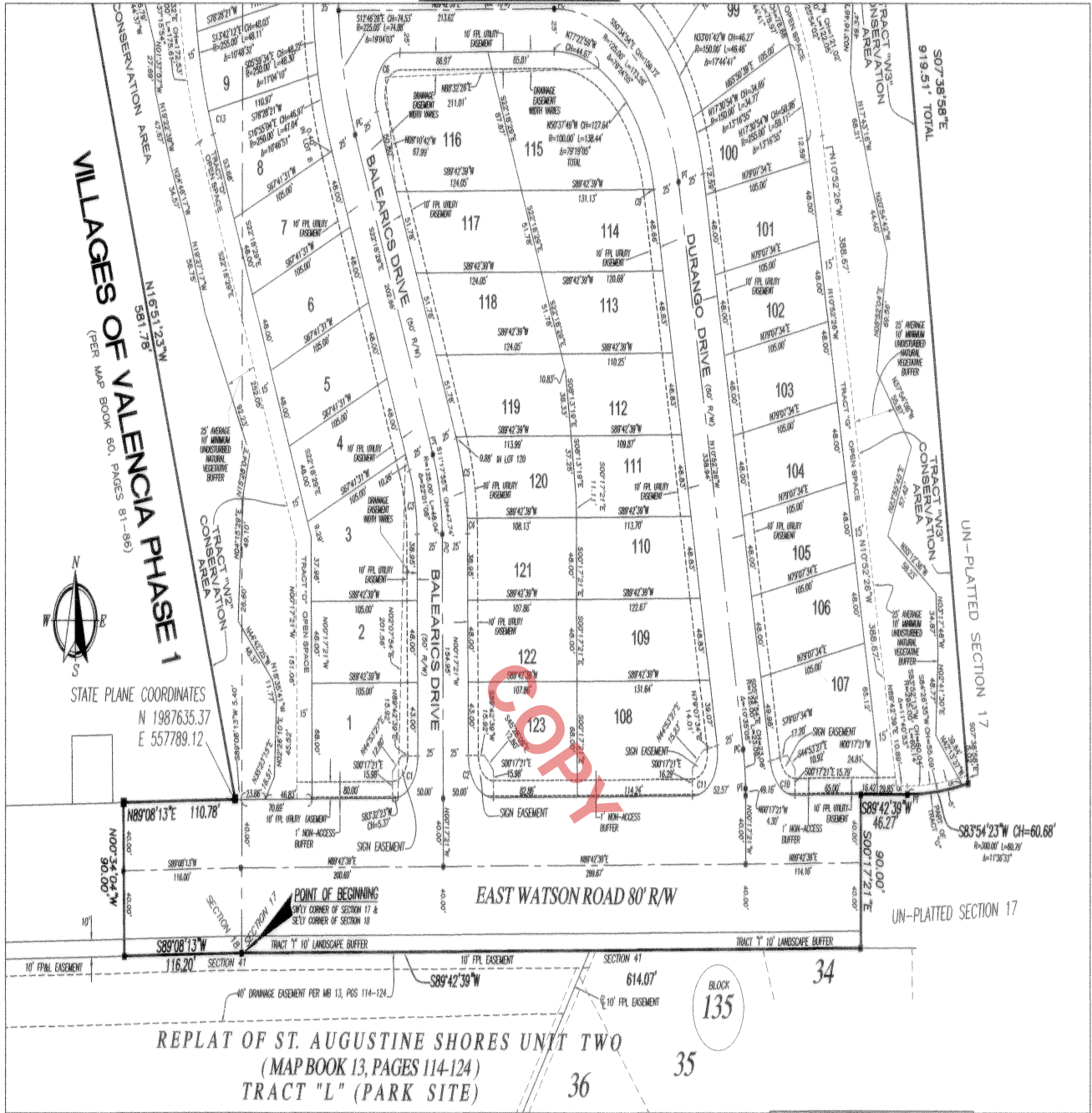


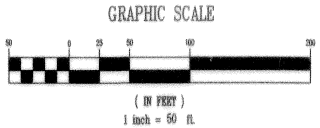
# VILLAGES OF VALENCIA PHASE 2A AND 3A

BEING A PORTION OF SECTION 17 AND SECTION 18, TOWNSHIP 8 SOUTH, RANGE 30 EAST, ST. JOHNS COUNTY, FLORIDA.

SEE SHEET 4 OF 4 SHEETS



STATE PLANE COORDINATES  
N 1987635.37  
E 557789.12



CURVE TABLE					
CURVE	LENGTH	RADIUS	CHORD	CHORD BEARING	DELTA
C1	39.27'	25.00'	35.36'	N44°42'39"E	90°00'00"
C2	39.27'	25.00'	35.36'	N45°17'21"W	90°00'00"
C3	38.43'	100.00'	36.19'	N11°17'59"W	22°01'08"
C4	9.86'	150.00'	9.05'	N12°01'07"W	3°27'32"
C5	48.59'	150.00'	48.38'	N13°01'41"W	8°33'36"
C6	48.88'	25.00'	41.46'	S33°42'05"W	112°01'08"
C7	29.62'	25.00'	27.92'	S56°20'46"E	67°53'09"
C8	12.14'	150.00'	12.14'	N87°58'11"W	4°38'20"
C9	0.17'	100.00'	0.17'	N10°55'21"W	0°05'58"
C10	34.65'	25.00'	31.94'	N59°34'54"W	75°24'55"
C11	43.89'	25.00'	38.47'	N39°25'06"E	109°35'09"
C12	12.14'	255.00'	12.14'	N88°55'33"W	2°43'37"
C13	14.24'	255.00'	14.24'	S28°42'29"E	312°01'00"

PRIVETT & ASSOC.  
OF FLORIDA, INC.  
SURVEYORS AND LAND PLANNERS  
2732 TOWNSHIP BOULEVARD  
JACKSONVILLE, FLORIDA, 32211  
(904) 743-7858